

TUTORIAL: DIY RAG DOLL by Vannina

Eleonor doll with mermaid costume

You can order this design at [Spoonflower](#)



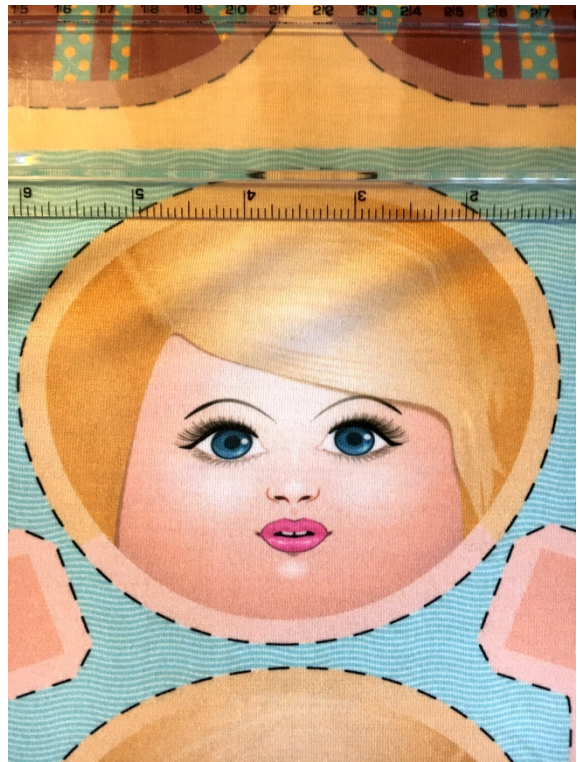
What you need :

- Eleonor doll and mermaid costume pattern
- Scissors or rotary cutter
- Sewing pins
- Needle
- Sewing thread
- Sewing machine
- Fiberfill



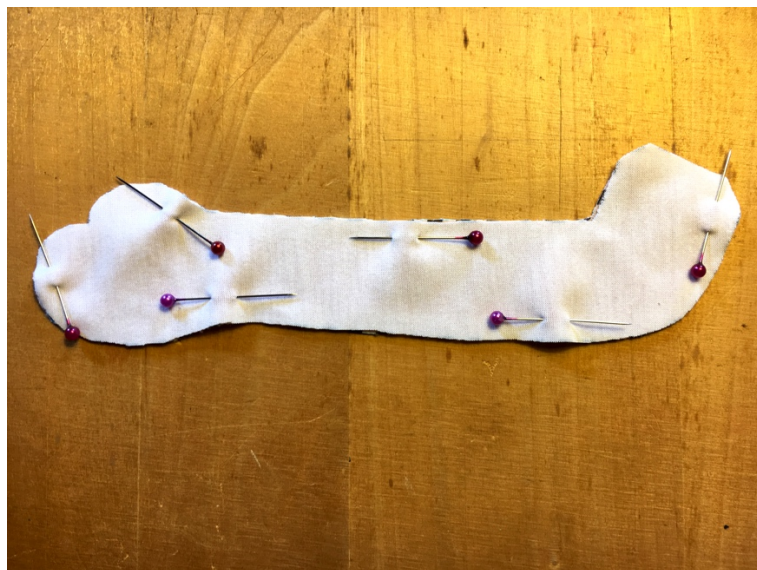
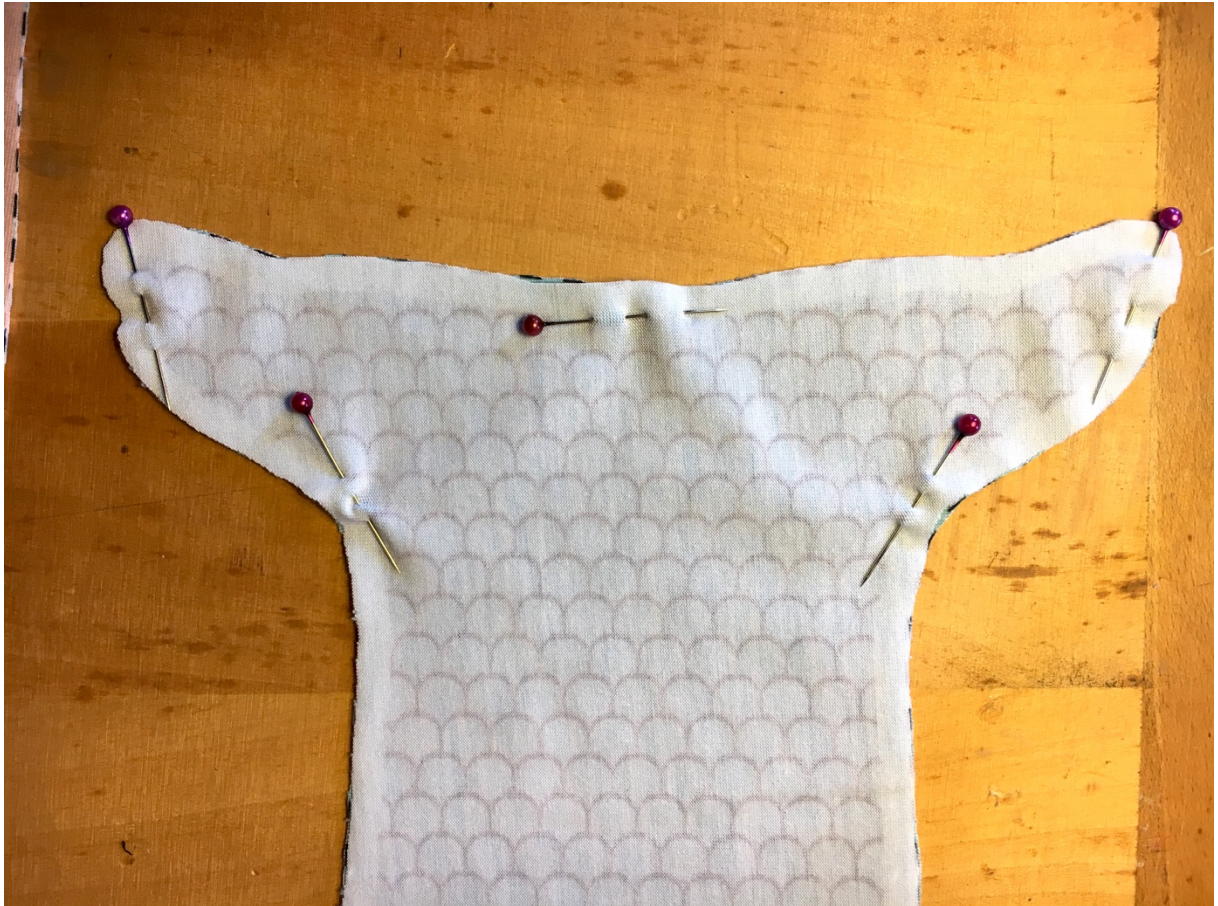
Step 1

Cut the fabric following the dots around the printed shapes



Step 2

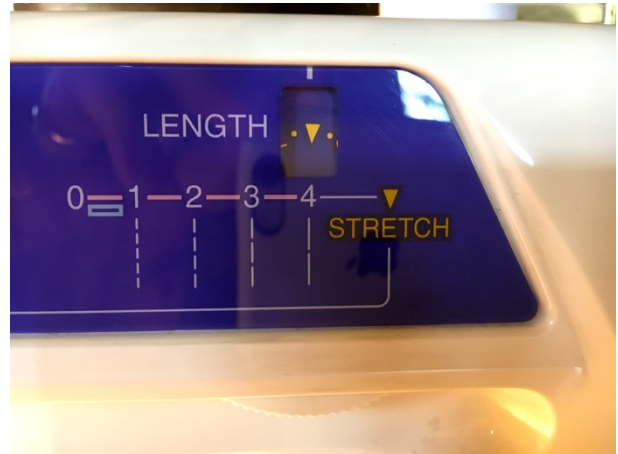
Put the front and back of each piece of fabric with right side facing and pin it.



Step 3

Sew the arms and legs 0.25 inches from the edge of the fabric. **Use a stretch stitch.**

Leave an opening at the end for turning and stuffing.



Step 4

Turn the arms and legs right side out.



Step 5

Stuff the arms and legs with fiberfill.



Step 6

Sew the head on the wrong side of the fabric like you did with the arms and legs.

With small scissors, cut a snick following the dots you can see in transparency at the back of the head.

Be careful only to cut the back part of the head!



Use the opening to turn the head right side out.

Use the opening to stuff the head with fiberfill.

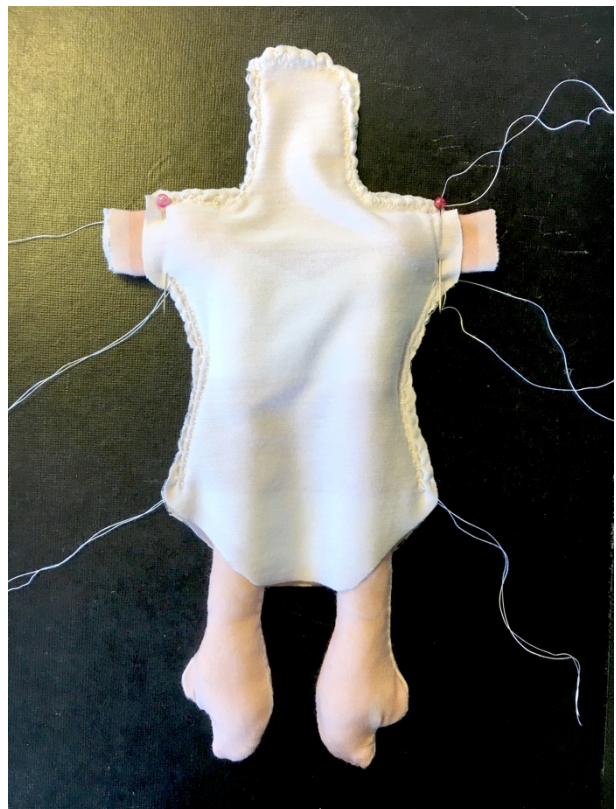


Step 7

Sew the body leaving an opening to insert the arms and don't sew the bottom of the body.



Insert the arms within the body as done in the picture. Pin the arms and body and sew.
Tie and cut the threads.



Don't forget to pull on the opened end of the arms (near the shoulders) before you pin and sew them.

Here is another way to attach the arms to the body:

- Before doing so, you must sew all around the entire body leaving a single opening **at the bottom**.
- Turn the body right side out.
- Stuff the body with the fiberfill using the bottom opening.
- Hand sew the arms to the body using invisible stitch.

Step 8

Turn the body right side out. Stuff with the fiberfill using the bottom opening.

Step 9

Insert the legs within the body. Pin them together.
Hand sew the legs to the body and close the bottom using invisible stitch.



Step 10

Insert the neck within the head and close the opening using invisible stitch. Do the same to attach the hair braid.



Mermaid costume:

To sew the mermaid tail:

Fold the top edge of the front and back pieces into the interior and sew hemstitches. Sew the tail pieces with right sides facing. Don't sew above the hems. Turn the tail right side out. Insert an elastic band at the waist. Tie and cut it.

To sew the top of the costume:

You can use white fabric scraps to do the scallops lining. Stuff with fiberfill for a volume effect. Sew the shells on a fabric stripe and tie in the back of the doll.

Voilà!





You can order this design at [Spoonflower](#)
Thanks' for looking

Design 2018 from [Vannina](#)